

A circular botanical illustration border surrounds the central text. It features various plants including ferns, a red leaf, a green leaf, a yellow flower, a purple flower, and a green leaf with a red vein. The background is a light blue-grey color.

Biodiversity Net Gain and social justice: perspectives from the planning system

Kiera Chapman,
University of Oxford

LOST NATURE



Are **housing developers** delivering their **ecological commitments**?

Dr Kiera Chapman
Professor Malcolm Tait
Sarah Postlethwaite



University of
Sheffield



justice

December 2024

Wild Justice report





53%
present



34% without
street trees

82% MISSING
Woodland edge
seed mixes

73% MISSING
Woodland edge
plug plantings

39% DEAD OR MISSING
Trees on planting plans

48% MISSING
Native hedges

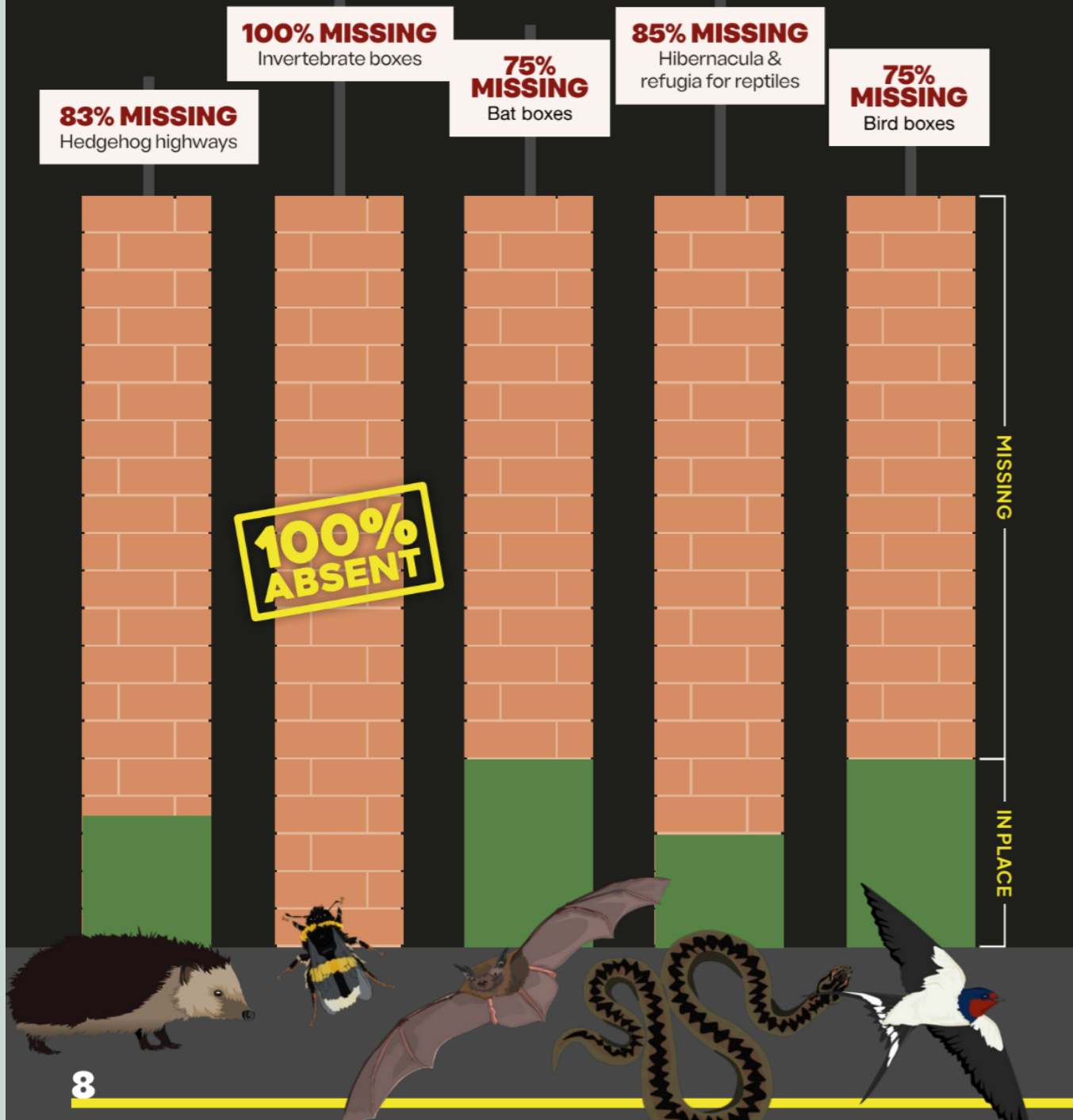
60% MISSING OR DAMAGED
Wet grassland

59% SOWN INCORRECTLY OR DAMAGED
Wildflower grasslands



SPECIES RICHNESS REDUCED







HELL

NATURE LOVERS:
ARE THEY OUT OF
TOUCH?

ECONOMIC
GROWTH: THE ONLY
THING YOU NEED
THIS SUMMER!

SOCIAL OR
ENVIRONMENTAL
GOALS: YOU
DECIDE!

THE
LATEST
PLANNING
TRENDS

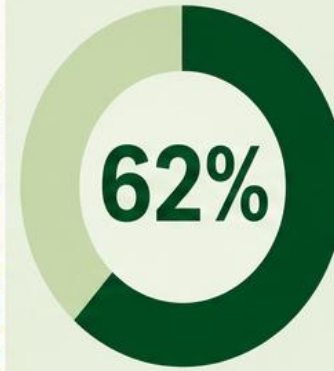
1.5M HOMES
WILL FIX
THE
HOUSING
CRISIS!!

BIODIVERSITY?
IT'S JUST A LOAD
OF OLD
FLOWERS





Only **20%** of people think environmental standards should be weakened to allow more housebuilding.



62% of people think environmental standards should be strictly maintained.



85% of adults say nature boosts their happiness.



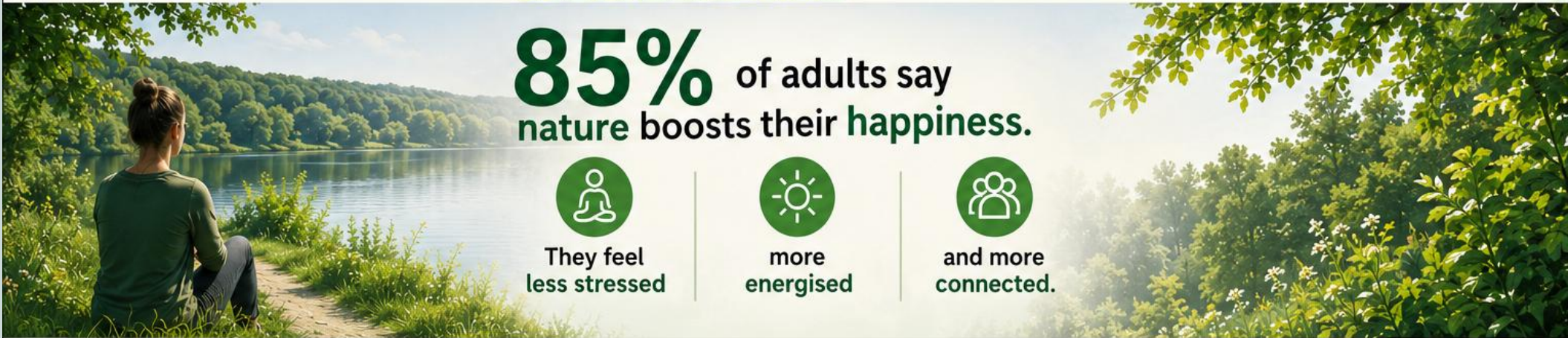
They feel less stressed



more energised



and more connected.



91% of people agree being in nature benefits their physical health.

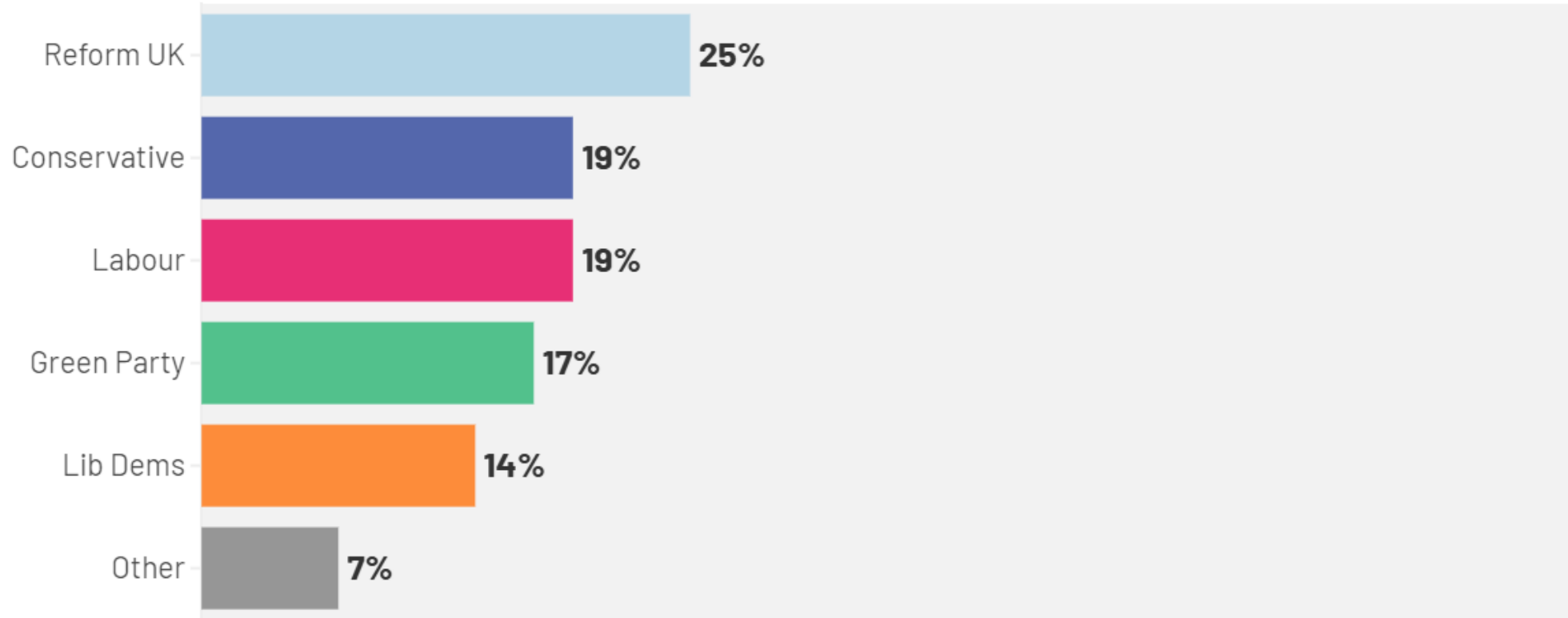


90% of people say it helps their mental wellbeing.



Headline voting intention: April 2026

How do you intend to vote in the General Election? Will you vote...?



Source: Ipsos Political Monitor • Base: 1,044 British adults 18+, 9-15 April 2026 ; Headline Voting Intention: all 9/10 certain to vote, always/usually/it depends vote in General Elections = 718. Margin of error is displayed at +/- 4%. All polls are subject to a wide range of potential sources of error. On the basis of the historical record of the polls at recent general elections, there is a 9 in 10 chance that the true value of a party's support lies within 4 points of the estimates provided by this poll, and a 2 in 3 chance that they lie within 2 points. This is especially important to keep in mind when calculating party lead figures.





“ We can’t have a situation where a newt is more protected than people who desperately need housing

Angela Rayner,
then Secretary of State for Housing,
Communities and Local Government



“ Jumping spiders stopping an entire new town – and I’ve not made that example up – that’s where we’ve got to.”

Keir Starmer,
Prime Minister



“ I care more about a young family getting on the housing ladder than I do about protecting some snails”

Rachel Reeves,
Chancellor of the Exchequer





1 BIODIVERSITY LOSS WILL COST THE UK DEARLY



By the **2030s**, models suggest

UK GDP will be **6–12% LOWER** because of biodiversity loss.



This is equivalent to a loss of **£150–300 BILLION**

TO COMPARE:

2008 GLOBAL FINANCIAL CRISIS



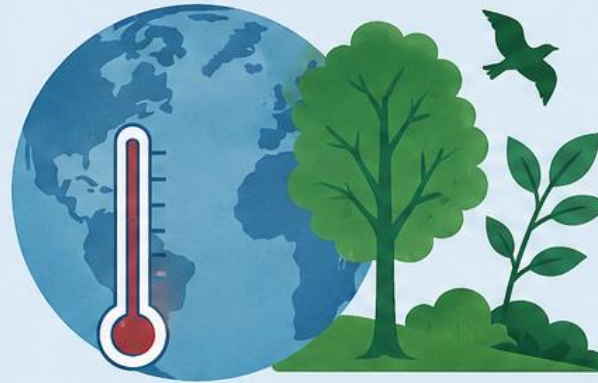
UK GDP fell by **4–6%**

COVID-19



UK GDP fell by **11%**

2 CLIMATE CHANGE AND BIODIVERSITY LOSS TOGETHER AMPLIFY THE ECONOMIC HIT



When we combine climate change and biodiversity loss, the impact on UK GDP is a loss of

8–14%
BY THE 2030s.

3 OUR FINANCIAL SYSTEM IS DEEPLY DEPENDENT ON NATURE



£930 BILLION
(52%)

of UK bank and insurer financial assets are at least moderately directly dependent on ecosystem services.



NATURE LOSS. ECONOMIC LOSS.



The growing economic costs of degrading the planet we depend on.

1 LAND DEGRADATION IS ALREADY COSTING THE GLOBAL ECONOMY



Globally, land degradation has already reduced productivity in

23%
of the global terrestrial area.

The cost of that is already between

\$235 BILLION – \$577 BILLION

2 POLLINATOR LOSS IS DRIVING DOWN CROP OUTPUTS – AND THE ECONOMY



Crop outputs are declining due to pollinator loss – by 2030 the global nosedive will be

9%
worth

\$400 BILLION

3 BUSINESS-AS-USUAL WATER MANAGEMENT THREATENS THE GLOBAL ECONOMY



Business-as-usual water management practices will put at risk

45%
of projected global GDP in 2050,

1.5 TIMES
the size of today's entire global economy

4 PARTIAL ECOSYSTEM COLLAPSE WILL TRIGGER TRILLIONS IN LOSSES



Partial ecosystem collapse will affect timber, pollination and fisheries, producing a global

\$2.7 TRILLION
loss in 2030

equivalent to
2.3%
decline in GDP



Thank
you

Professor Malcolm Tait

Dr Kiera Chapman

kiera.chapman@ell.ox.ac.uk